

COBA's product suite

Technological requirements

Summary

This guide presents the technological requirements

Version of November 1, 2023

CONTACTS

Berger-Levrault Canada

2130, boulevard Dagenais Ouest, bureau 200
Laval (Québec) H7L 5X9

514 251-2622 | 1 844 228-2622
ventes.canada@berger-levrault.com

WARNING and NOTES

In this document, the masculine gender is used in the neutral sense and designates women as much as men.

This document is confidential. Do not copy or distribute this document without the explicit consent of Berger-Levrault Canada ltée

berger-levrault.com

Table of content

Database server (and Windows software).....	1
Operating system allowed:.....	1
Recommended databases:	1
Hardware recommendations (Processor, Memory**):	1
V6 application server	2
Operating system allowed:.....	2
Hardware recommendations (Processor, Memory**):	2
Server for portals (internet or intranet)	3
Operating system allowed:.....	3
Hardware recommendations (Processor, Memory**):	3
Server for Qlik management Tables	4
Operating system allowed:.....	4
Hardware recommendations (Processor, Memory**):	4
Workstation for Windows software	5
Operating system allowed:.....	5
Hardware recommendations (Processor, Memory**):	5
Notes:.....	6
Proposed architecture	7
Minimal architecture.....	7
Architecture for large institutions	8
Compatibility with other products	9
Office 365	9
Compatibility with browsers.....	9

Database server (and Windows software)

Operating system allowed:

Microsoft Windows « Server » 2012	(x64)	<u>End of support : October 2023</u>
Microsoft Windows « Server » 2012 R2	(x64)	<u>End of support : October 2023</u>
Microsoft Windows « Server » 2016	(x64)	
Microsoft Windows « Server » 2019	(x64)	
Microsoft Windows « Server » 2022	(x64)	

Recommended databases:

Microsoft SQL Server 2016 (Express, Standard, Enterprise, ...)	
Microsoft SQL Server 2017 (Express, Standard, Enterprise, ...)	
Microsoft SQL Server 2019 (Express, Standard, Enterprise, ...)	
Microsoft SQL Server 2022 (Express, Standard, Enterprise, ...)	

Hardware recommendations (Processor, Memory**):

Minimum	Recommended
4 physical cores with 16 gb RAM	8 physical cores with 32 gb RAM

** Memory dedicated exclusively to the database manager.

Notes:

1. A small institution with a small amount of data can use a single server for the database service and the V5 application server.
2. No matter the size of the institution, the server for portals can not be the same server as the database server and V6 applications. The portal server is a server that will be exposed to the WEB and it is not recommended to expose an administrative server on the WEB.
3. Microsoft SQL Server can not be installed on a server that is a Domain Controller (DC).
4. For better protection we recommend a RAID configuration for hard drives.

V6 application server

Operating system allowed:

Microsoft Windows « Server » 2012	(x64)	<u>End of support : October 2023</u>
Microsoft Windows « Server » 2012 R2	(x64)	<u>End of support : October 2023</u>
Microsoft Windows « Server » 2016	(x64)	
Microsoft Windows « Server » 2019	(x64)	
Microsoft Windows « Server » 2022	(x64)	

Hardware recommendations (Processor, Memory**):

Minimum	Recommended
4 physical cores with 16 gb RAM	8 physical cores with 32 gb RAM

** Memory **dedicated** exclusively for the IIS Internet Information Services platform

Note:

For better protection we recommend a RAID configuration for hard drives.

Server for portals (internet or intranet)

COBA's Internet/Intranet portals are designed to allow users to consult, with a browser, the data entered via the administrative software of the COBA's product suite via the Internet / Intranet. To do this you will need a "Microsoft Internet Information Services Web Server" web server.

Requests received from the Internet / Intranet portals will be forwarded to the database manager thus allowing access to the data of the administrative software of the COBA's product suite. For Internet access to the Web server, the server must have a fixed public IP address and have a connection to the LAN database server. One of the recommended secure methods is to place the Web server in a DMZ * with these specific rules:

Ports TCP #80 & #443 (HTTP, HTTPS): Public access

Ports TCP #1435 (MS SQL Server): Access to the local network's Data base server

For more security, Berger-Levrault requires the installation of a trusted SSL / TLS certificate on the WEB server. In addition, the security of your web server should comply with the highest recommendations suggested by Microsoft. For more information, see the Microsoft Web site under "Microsoft recommended hardening practices for Windows and IIS."

*A demilitarized zone (DMZ) is a subnet isolated by a firewall with limited access to other servers in the network.

Operating system allowed:

Microsoft Windows « Server » 2012	(x64)	End of support : October 2023
Microsoft Windows « Server » 2012 R2	(x64)	End of support : October 2023
Microsoft Windows « Server » 2016	(x64)	
Microsoft Windows « Server » 2019	(x64)	
Microsoft Windows « Server » 2022	(x64)	

Hardware recommendations (Processor, Memory**):

Minimum	Recommended
4 physical cores with 16 gb RAM	8 physical cores with 32 gb RAM

** Memory **dedicated** exclusively for the IIS Internet Information Services platform

Note:

For better protection we recommend a RAID configuration for hard drives.

Server for Qlik management Tables

The management tables developed with the Qlik application are designed to allow users to view, through our intranets, tables based on the data entered via the administrative software of the COBA range. To do this you will need a web server with Qlik application.

For access to the Qlik web server, the server must have a fixed public IP address and have a connection to the local network database server to refresh the data in the warehouse. One of the recommended secure methods is to place the Web server in a DMZ * with these specific rules:

Ports TCP #80 & #443 (HTTP, HTTPS): Public access

Ports TCP #1435 (MS SQL Server): Access to the local network's Data base server

For added security, Berger-Levrault requires the installation of a trusted SSL / TLS certificate on the Qlik web server. In addition, the security of your Qlik web server should comply with the highest recommendations suggested by Microsoft. For more information, see the Microsoft Web site under "Microsoft recommended hardening practices for Windows and IIS."

*A demilitarized zone (DMZ) is a subnet isolated by a firewall with limited access to other servers in the network.

Operating system allowed:

Microsoft Windows « Server » 2012	(x64)	End of support : October 2023
Microsoft Windows « Server » 2012 R2	(x64)	End of support : October 2023
Microsoft Windows « Server » 2016	(x64)	
Microsoft Windows « Server » 2019	(x64)	
Microsoft Windows « Server » 2022	(x64)	

Hardware recommendations (Processor, Memory**):

Minimum	Recommended
4 physical cores with 16 gb RAM	8 physical cores with 32 gb RAM

** Memory **dedicated** exclusively for Qlik application.

Note:

For better protection we recommend a RAID configuration for hard drives.

Workstation for Windows software

Operating system allowed:

Microsoft Windows 8	(x86 et x64)	End of support : january 2023
Microsoft Windows 10	(x86 et x64)	
Microsoft Windows 11	(x86 et x64)	

Hardware recommendations (Processor, Memory**):

Usage type	Minimum	Recommended
Occasional*	2.5 GHz with 2 gb RAM	3.0 GHz with 2 gb RAM
Normal**	2.5 GHz (2 cores) with 3 gb RAM	3.0 GHz (2 cores) with 4 gb RAM
Intensive***	3.0 GHz (2 cores) with 4 gb RAM	3.0 GHz (8 cores) with 4 gb RAM

* Occasional data entry or consultation

** Normal data entry

*** Volume processing ex.: payroll calculation, student assignment

Notes:

Win2PDF software must be purchased and installed on workstations that **use** Windows software when they need to **generate PDF documents** for **e-mailing** or **uploading to the portal**.

The cost of this software is around \$ 45 per workstation.

<https://www.win2pdf.com/>

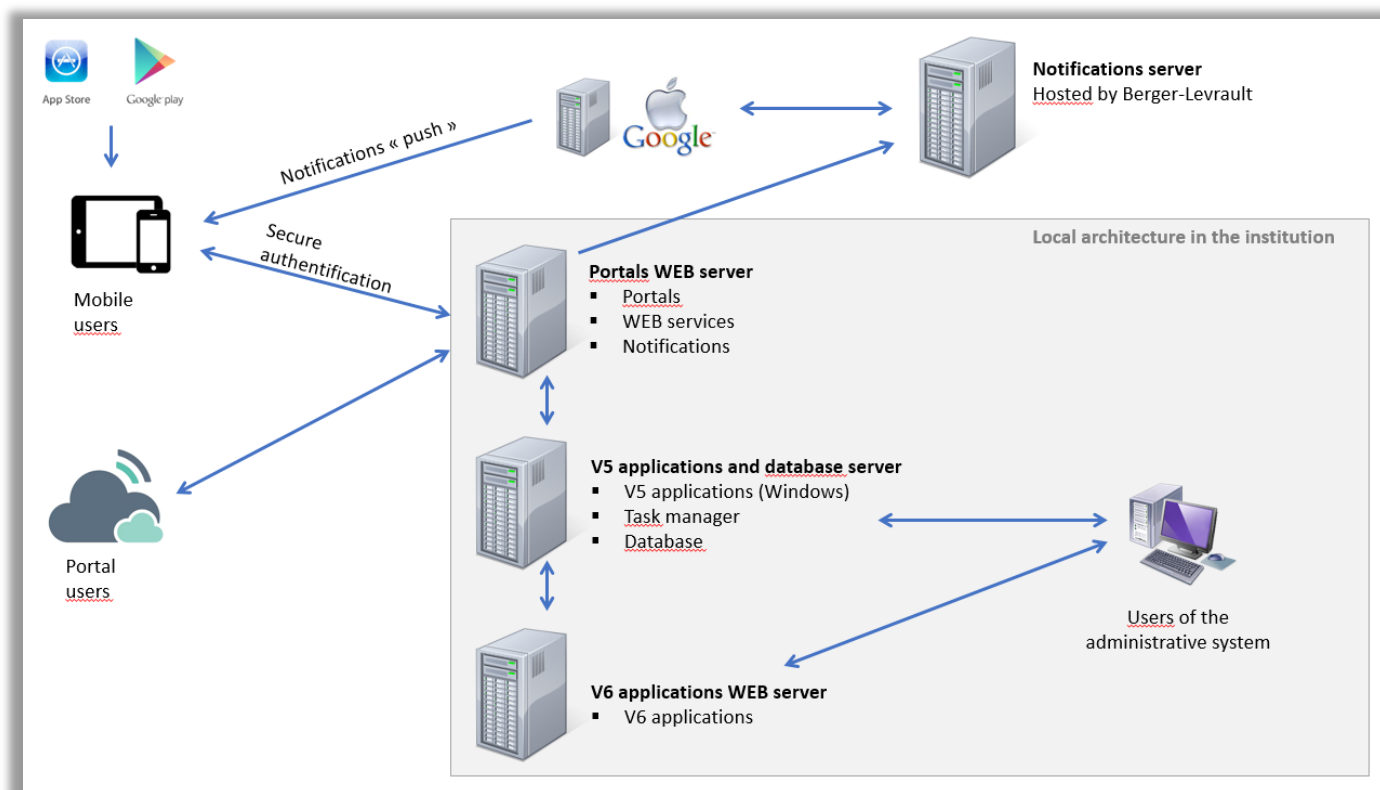
Notes:

- These technological requirements represent the minimum you need to ensure the satisfactory performance of COBA's product suite. In order to obtain the best possible results from COBA's product suite, we strongly suggest that you purchase the most advanced models of computers and peripherals available at the time you make your choice. Computer technology evolves very rapidly, and the amount of memory required to run software on the Windows platform increases regularly.
- We recommend that you use laser printers which have had the drivers recently upgraded by the supplier to your Windows version preferred by Berger-Levrault.
- Considering the rapid evolution of these technologies, recommendations related to equipment are updated every year by Berger-Levrault.
- Material recommendations are suggested for guidance only. Any other layout could be functional. For more information, consult your Berger-Levrault representative.
- This document does not address the issue of networks. For recommendations on this subject, we suggest that you communicate directly with an expert in your area.
- Installation disks and database manager update versions installed on your servers must have been validated by Berger-Levrault.
- Make sure that the last upgrades for your network operating system updates are installed on the server **before** installing the database manager.

Proposed architecture

The architecture we propose allocates the load of operations on 2 to 4 servers, so it don't create funnel effects on one of the servers.

Minimal architecture

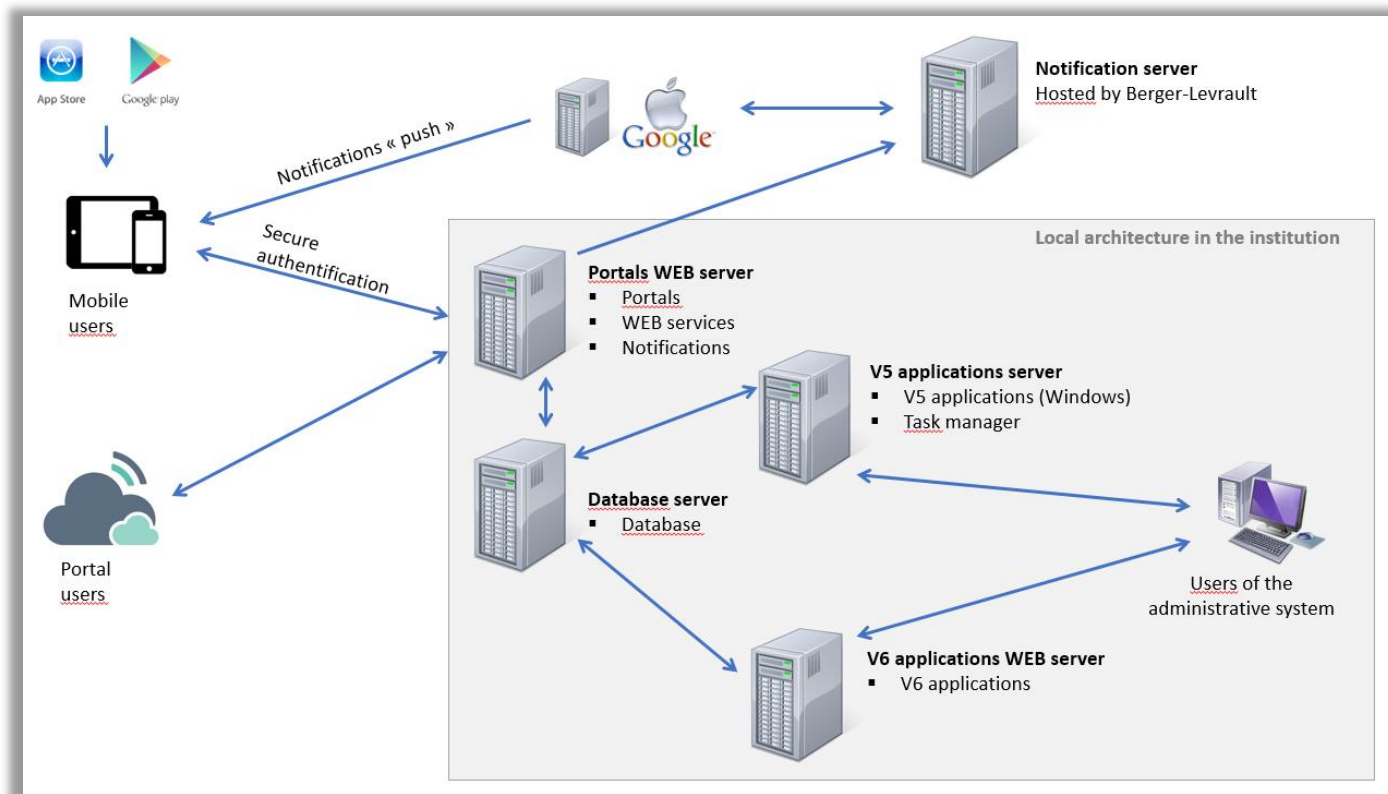


The **V5 applications and database server** handle all transactions with Microsoft's SQL Server database for both the administrative software and the portals. In addition, this server manages the V5 administrative software for the users of the institution and also assumes the role of task manager.

The **portals WEB server** manages the portals and manages the WEB services to feed the mobile application and other systems.

The **V6 applications WEB server** (for V6 applications only) manages the V6 administrative software for the users of the institution.

Architecture for large institutions



The **database server** handles all transactions with Microsoft's SQL Server database for both the administrative software and the portals.

The **V5 application server** manages the administrative software for the users of the institution. By default, the V5 applications server also assumes the role of the task manager server.

The **portal WEB server** manages the portals and manages the WEB services to feed the mobile application and other systems.

The **V6 applications WEB server** (for V6 applications only) manages the V6 administrative software for the users of the institution.

The **task manager server** (optional) is required only in the situation where we want to free resources on the application server to improve its performance.

Compatibility with other products

Office 365

Using Office 365 as a relay for sending emails from COBA's product suite.

Please refer to the following link:

[https://technet.microsoft.com/en-ca/library/dn554323\(v=exchg.150\).aspx](https://technet.microsoft.com/en-ca/library/dn554323(v=exchg.150).aspx)

You must use option 3 - Configure a connector to send mail using Office 365 SMTP relay

Compatibility with browsers

We are aware that the users of our **portals** use a variety of internet browsers.

In order to provide users with a pleasant browsing experience, we only support the main modern browsers (Chrome, Firefox, Edge and Safari *).

Please note that our **portals** can run under other modern browsers supporting HTML5 and CSS3, but are not officially supported by Berger-Levrault.

* Internet Explorer 11 browser is no longer supported.