

## **Installation guide and configuration of settings for Pervasive.SQL 7 in a Novell Netware environment**

This guide explains the different steps during the installation and configuration of Pervasive SQL settings in a Novell Netware environment; **it is not an installation guide of Cobra management software.**

1. Technical requirements
2. Pre-installation preparation
3. Installing the software (Pervasive)
4. Configuring the server settings
5. Table of all Pervasive SQL v7 settings
6. Installation of client components on a workstation

April 2004



## 1. Technical requirements

---

To install and configure Pervasive SQL, you must logon onto the server with an account that has "Administrative" or "Supervisor" privileges.

Verify before proceeding that you have the disk space requirements for the installation on both the server and workstations.

Disk space required	
Novell NetWare server	110 Mb
Workstations - Windows 95/98 or Windows NT/2000/XP	22 Mb

### Technical requirements for the Server

For a minimum installation (3 user license), we recommend:

- ✍ Pentium II 500 or greater
- ✍ Minimum of 128 Mb RAM dedicated to the Pervasive database engine

The installation of all Service Packs and updates for Novell Netware should be completed prior to the installation of Pervasive SQL 7; you can find the latest updates for Novell Netware on their website.

For an installation larger than 3 users or on a server with other services installed, please contact Cobra's technical service department.

### Technical requirements for the workstations

- ✍ Windows 95 rev. B/98 or Windows NT/2000/XP
- ✍ Pentium II or better processor
- ✍ 64 Mb RAM dedicated to the software

## 2. PRE-INSTALLATION PREPARATIONS

- ✍ The BTRIEVE or Pervasive.SQL or Scalable SQL services need to be stopped prior to the installation.
- ✍ The installation of Pervasive SQL 7 must be done from a workstation connected to the server with the permissions necessary to create files and directories on the SYS volume and SYSTEM directory. Ideally, you should map the letter **F** to the SYS volume.
- ✍ We recommend that you exit all other software before proceeding with the installation
- ✍ To avoid any technical issues during the installation, we suggest you use the default directory offered by the installation wizard, F:\SYSTEM\.
- ✍ During the installation the progress windows may show 100% for a few minutes. This is normal, the installation is progressing.

### 3. INSTALLING THE SOFTWARE (PERVASIVE)

BTRIEVE and SSQL services must be stopped prior to proceeding with the installation

On the server console, execute SQLSTOP and BSTOP commands to unload these services. Unload any other services or application dependant on these services as well.  
i.e.(« ArcServe » or « IP/IPX Gateway »).

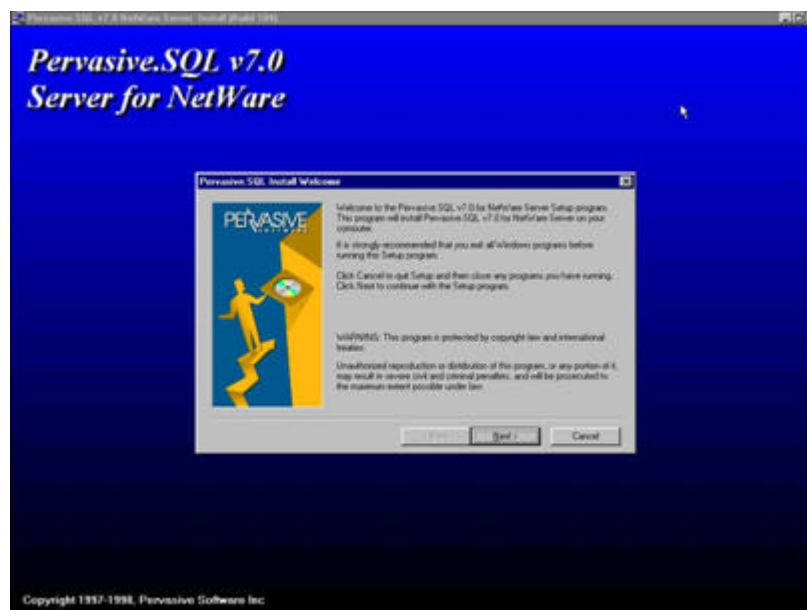
#### 1. Insert the CD into the CD-Rom reader of the workstation

If the PC is configured with «AutoPlay CDs », the installation will start automatically.

If the PC is not configured with «AutoPlay CDs » then simply browse to the CD-Rom and execute SETUP.EXE:

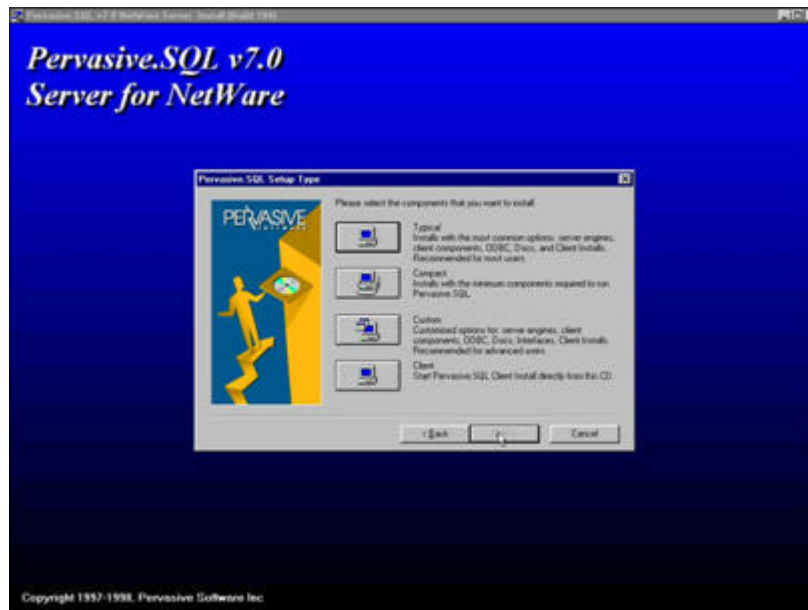
- ✍ Click on START
- ✍ Click on RUN
- ✍ Type: <drive letter of cdrom >:\SETUP.EXE (i.e. d:\setup.exe)

You should see the following window appear:



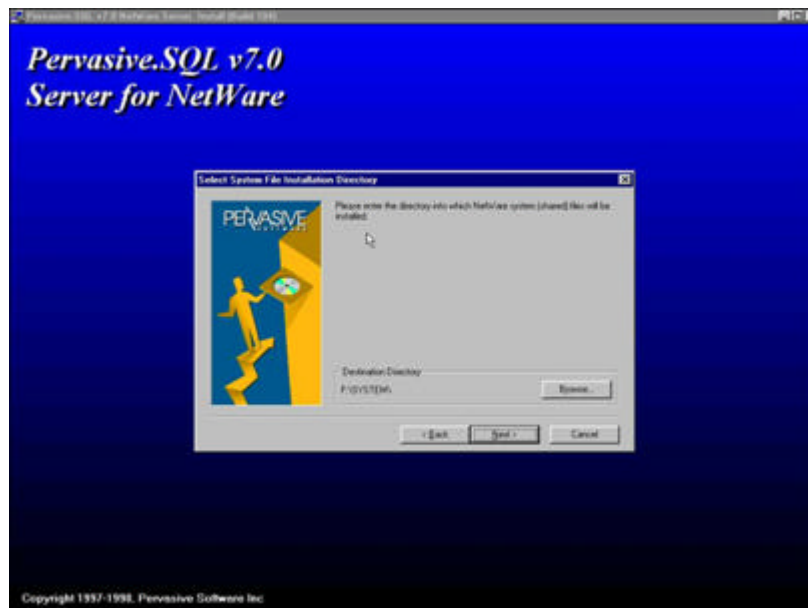
2. Click on Next

You should see the following window:



3. Select « Typical »

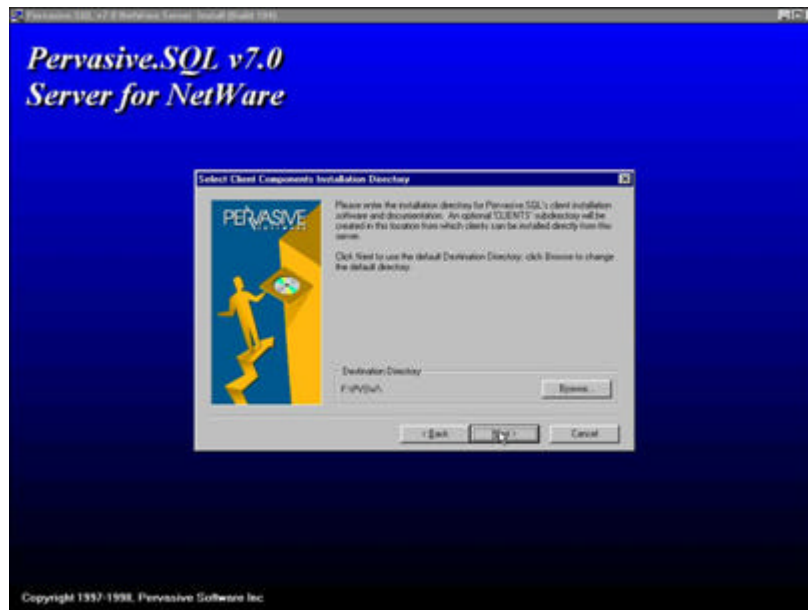
This window then appears.



4. Specify the destination directory the installation will use to install the software  
We suggest using the default suggestion of the installation wizard.

5. **Click Next**

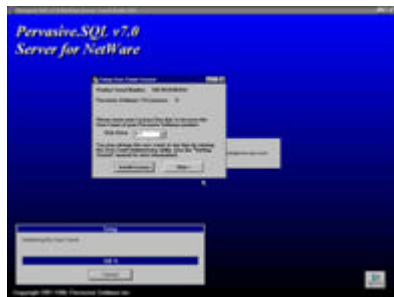
Another destination selection window appears.



Once again, we suggest using the default suggestion of the installation wizard.

6. **Click Next**

This window will appear:

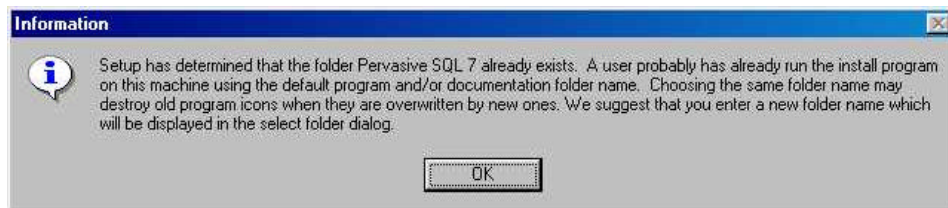


7. **Insert the License diskette into the floppy drive**

8. **Click Install Licence**

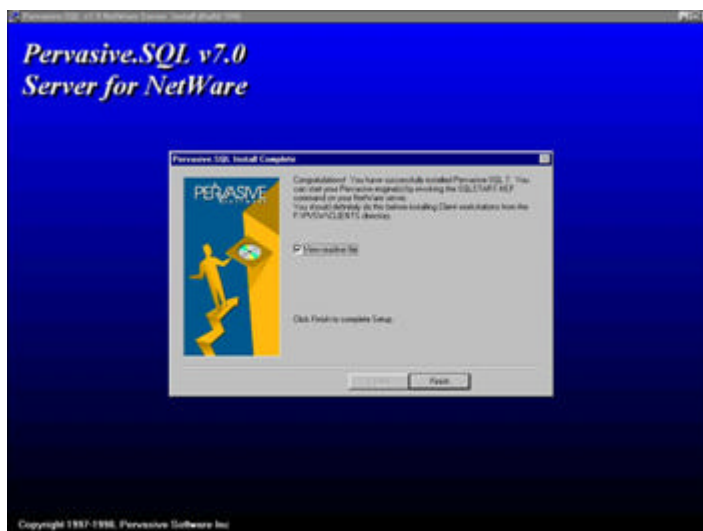
**Note:** use a working copy of this diskette to preserve the original one intact.

If this is your second attempt or a re-installation of the software you might receive the following message indicating that certain directories already exist. You should reuse the same directories. If the Pervasive SQL 7 directory (PVSW) already exists click « OK » and then « NO » to the following prompt to install into a different directory. Also Select Pervasive SQL 7 for the Start Menu shortcut.



Click Next and the installation will now proceed.

Once the installation is finished, this window will appear:



9. Click Finish to end the installation
10. Copy the file SSQ.LNLM from the Patches directory on the CD into the SYSTEM directory on the SYS volume. Answer YES to overwrite the existing file.

**11. Start the Btrieve and Scalable SQL services**

On the server console, type SQLSTART « Enter », this will start (« SSQL » and « BTRIEVE »).  
If you stopped other services before the installation you may start them now (« ArcServe » or « IP/IPX Gateway »).

**12. Configuring the services to start automatically on the server**

From the « INSTALL » utility on the server console, add the line SQLSTART to the « AUTOEXEC.NCF » file. Insure that this line is executed prior to other services listed in Autoexec.ncf. **Ex:**       **SQLSTART** (Pervasive SQL 7)  
                              **ASTART6** (Arcserve)



#### 4. CONFIGURATION OF THE SERVER SETTINGS

The configuration of the server is necessary only once, at the time of installation. No other maintenance need be done other than adding licenses as needed.

##### 1. If the services are not started on the server

On the server console, type SQLSTART « Enter », this will start (« SSQL » and « BTRIEVE »).

If you stopped other services before the installation you may start them now (« ArcServe » or « IP/IPX Gateway »).

##### 2. Consult the configuration guide on pages 11 to 13

##### 3. From the workstation launch the Setup utility by :

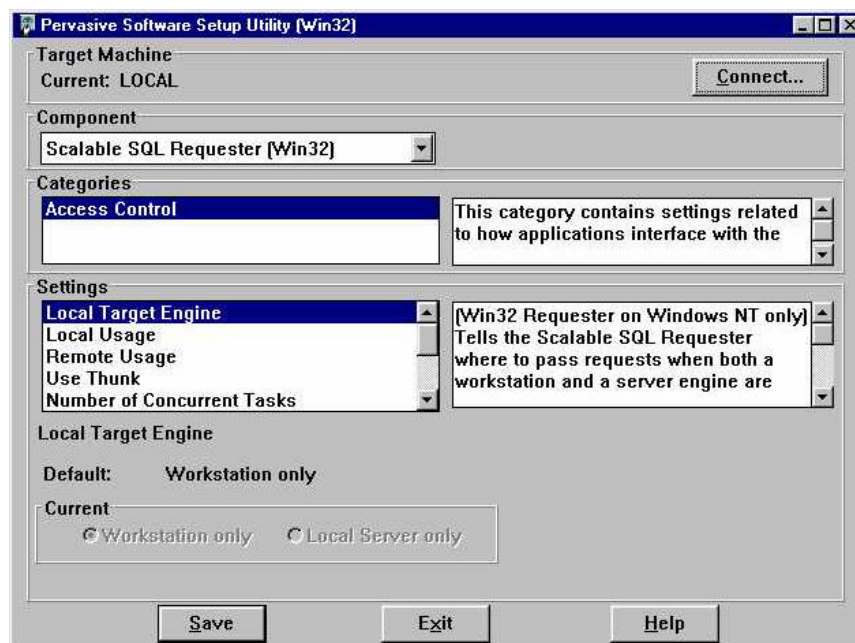
Start

Programs

Pervasive SQL 7

Setup (Win32)

The following window will appear:



4. **To start the configuration of the server, click on CONNECT**

The following window should appear:



5. **Enter the Server Name and click OK**

The configuration utility will connect to the server and display its settings.

To configure the various settings, simply choose the appropriate parameter: «Component», «Category» and « Settings» and then select the setting you wish to modify and enter the new value.

**Example :**

To set the amount of Open Files permitted by the engine, simply choose : Component ->

Microkernel Database Engine

Category -> File Settings

Settings -> Open Files

In the Current field enter the appropriate value (500 per Cobra application)

6. **Once all the settings have been modified, click on Save and then Exit**

7. **Restart the server to insure that all settings will be applied**

Exit all users from the server and type « **DOWN**» at the server console

8. **The installation is now complete**

## 5. TABLE OF PERVASIVE SQL SETTINGS

Component	Categories	Settings	Current
Scalable SQL Engine	System Configuration	Enable External Procedures	Off
		External Sort File Directory	Default
		Isolation Level	Cursor Stability
		Communications Buffer Size	SERVEUR NT SEULEMENT
		Worker Threads	SERVEUR NT SEULEMENT
		Check Table Definitions	Off
	Trace File Control	Scalable SQL Logins/Logouts	Off
		Failed Scalable SQL Logins	Off
		All Other Scalable SQL Calls	Off
		Trace File	Default
Scalable SQL Communications Manager	Server Communication Configuration	Number of Sessions	= 6 X the licensed users <sup>1</sup>
		Communications Buffer Size	32768
		Number of Communications Threads	100
		Receive Packet Size	4096
Microkernel Database Engine	File Settings	Open Files	500 per COBA application.
		Handles	= 240 X the licensed users.
		Index Balancing	Off
		Archival Logging of Selected Files	Off
		Create File Version	6.X
		System Data	If needed
		Maximum Databases	10

### Notes

1. In this context it is the licensed users of Pervasive SQL 7 not the Novell server.

Component	Categories	Settings	Current
	Memory Resources	Cache Allocation	32768 <sup>2</sup>
		Communication Buffer Size	35
		Largest Compressed Record Size	1
		Extended Operation Buffer Size	35
		Sort Buffer Size	(0) <sup>3</sup>
	Client/System Transactions	Transaction Durability	Off
		Operation Bundle Limit	1000
		Initiation Time Limit	10 000
		Transaction Log Buffer Size	64
		Transaction Log Size	512
	System Resources/Directories	Active Clients	6 X the licensed users
		I/O Threads	15
		Wait Lock Timeout	1
		Transaction Log Directory	Default
		Working Directory	Default
	Trace Btrieve Operations	Trace Operations	Off
		Trace File	Default
		Select Operations	ALL
		Number of Bytes From Data Buffer	32
		Number of Bytes From Key Buffer	32

## Notes

- The cache allocation setting will depend on the total available memory (RAM) installed on the server. The minimum value needed is 32768. A higher value will improve the performance of the Cobra applications.
- This value should be set to zero (0), the Microkernel will use the amount of resources necessary

Component	Categories	Settings	Current
Btrieve Communications Manager	Btrieve Message Router	Load BROUTER	<i>See note</i> <sup>4</sup>
	Server Communication Configuration	Brouter Communications Buffer Size	35
		Number of sessions	6 X the licensed users
		Communications Buffer Size	32768
		Number of Communications Threads	30
		Receive Packet Size	1500
		Use SAP	AutoDetect

#### Notes

4. If you have Coba applications on more than one server, set this to ON. This will permit the database to communicate properly.

## 6. INSTALLATION OF CLIENT COMPONENTS ON A WORKSTATION(OPTIONAL)

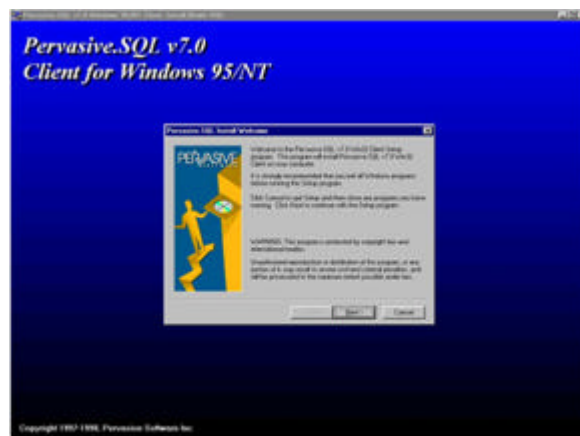
### 1. Installing the client via the server

To install the client utilities on a workstation that was not used to install Pervasive SQL 7 on the server:

- ✍ Click on START
- ✍ Click on RUN
- ✍ Type the following and click OK:



The following window will appear:



### 2. Click Next

The following window will appear:



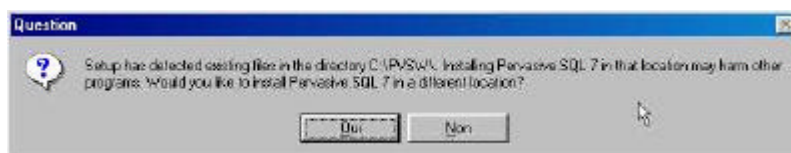
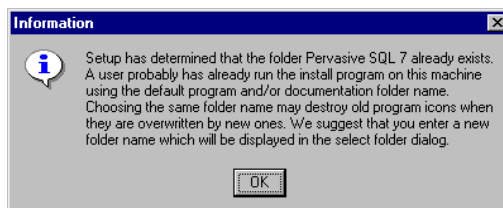
### 3. Select Typical

The following window will appear:

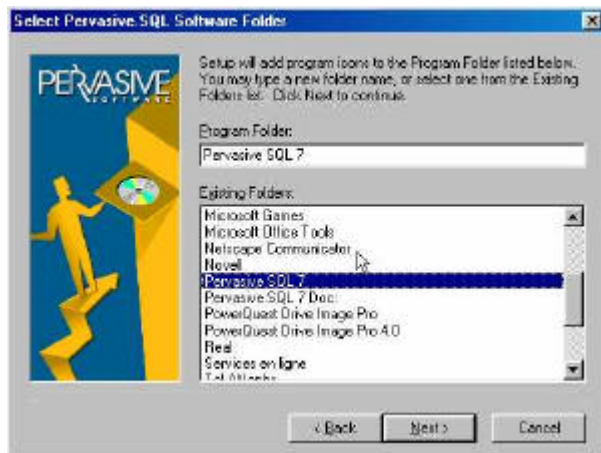


### 4. We recommend installing into the default directory, click NEXT

If this is your second attempt at installing this software on the workstation or a reinstallation you may receive the following Information Window indicating the destination directory already exists. You should use this path for the reinstallation.

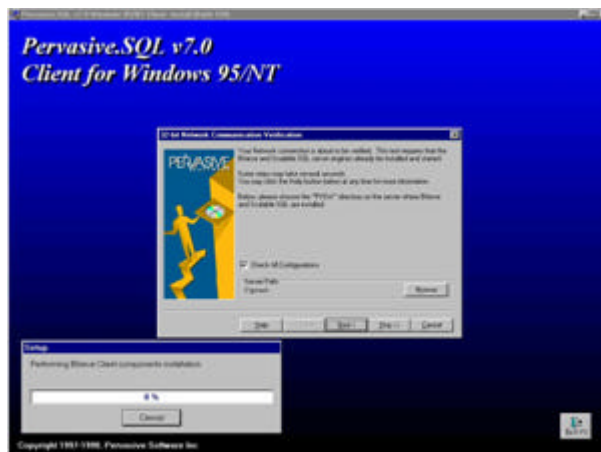


If the Pervasive SQL 7 folder already exists click OK and select the Program Folder Pervasive SQL 7 so that the installation may proceed, then click Next.



At this point the installation will verify network connectivity with the server.

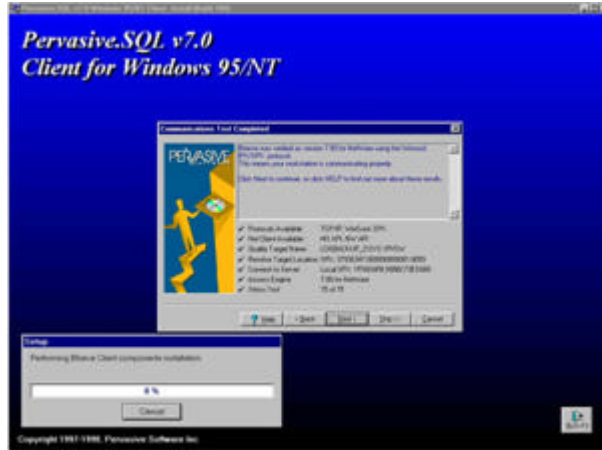
5. **Make sure that the services are loaded and running on the server**





6. Click Next

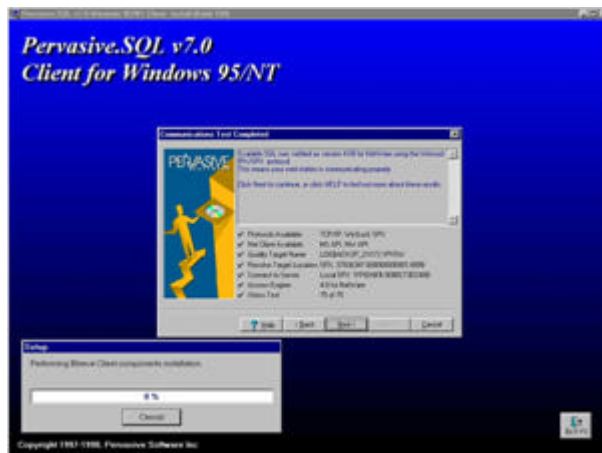
Once the Btrieve communication tests are completed, the following window will appear explaining the results.



7. Verify that all the tests completed successfully.

8. Click Next

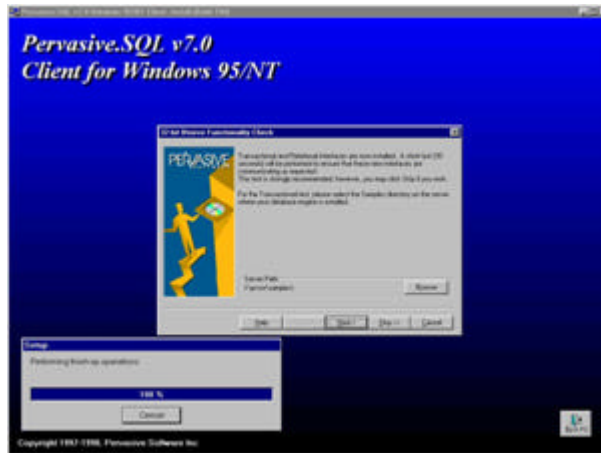
Once the Btrieve communications tests are completed the Scalable SQL tests will begin; once they are completed they will display the results in the following window.



9. Verify that all the tests completed successfully.

10. Click Next.

The following window will appear:



11. Verify that the SAMPLES directory is in the Server Path. (i.e. f:\pvsw\samples\)

12. Click Next.

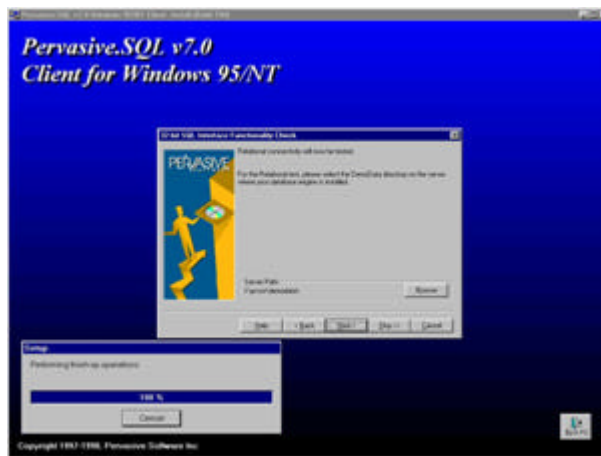
Once the transactional tests are completed the following window will appear.



13. Verify that all the tests completed successfully.

14. Click Next

The following window will appear:



15. Verify that the DEMODATA directory is in the Server Path. (i.e. f:\pvsw\demodata\)

16. Click Next

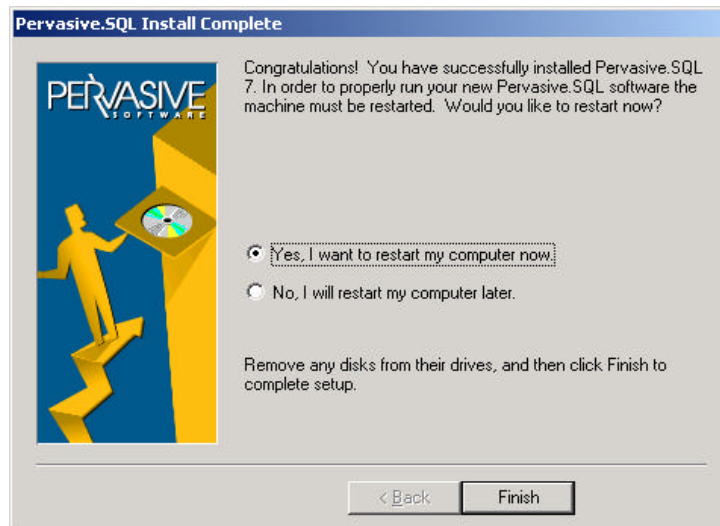
Once the relational tests are completed the following window will appear.



Verify that all the tests completed successfully.

**17. Click Finish**

The following message will appear:



**Select YES, I want to restart my computer now and click FINISH.**